

implicit" Modified Forward Euler integration algorithm; that is, the algorithm is a compromise between the explicit Forward Euler and the implicit Backward Euler integration methods. Moreover, we have developed a strategy for selection of the simulation time step which renders the algorithm stable and ensures simulation accuracy.

#### REFERENCES

- [1] C. W. Gear, *Numerical Initial Value Problems in Ordinary Differential Equations*. Englewood Cliffs, NJ: Prentice-Hall, 1971.
- [2] R. K. Brayton, F. G. Gustavson, and G. D. Hachtel, "A new efficient algorithm for solving differential-algebraic systems using implicit backward differentiation formulas," *Proc. IEEE*, vol. 60, pp. 98-108, 1972.
- [3] F. H. Branin, G. R. Hogsett, R. L. Lunde, and L. E. Kugel: "ECAP II—A new electronic circuit analysis program," *IEEE J. Solid-State Circuits*, vol. SC-6, pp. 146-166, 1971.
- [4] L. W. Nagel, "SPICE2: A computer program to simulate semiconductor circuits," ERL memo ERL-M520, Univ. California, Berkeley, May 1975.
- [5] G. D. Hachtel, R. K. Brayton, and F. G. Gustavson, "The sparse tableau approach to network analysis and design," *IEEE Trans. Circuit Theory*, vol. CT-18, pp. 101-113, 1971.
- [6] L. Nagel, and R. Rohrer: "Computer analysis of nonlinear circuits, excluding radiation (CANCER)," *IEEE J. Solid-State Circuits*, vol. SC-6, pp. 168-182, 1971.
- [7] M. E. Van Valkenburg, *Network Analysis*. Englewood Cliffs, N.J.: Prentice-Hall, 1974.
- [8] P. D. Crout, "A short method for evaluating determinants and solving systems of linear equations with real or complex coefficients," *AIEE Trans.*, vol. 60, pp. 1235-1241, 1941.
- [9] L. O. Chua, and P. M. Lin, *Computer-Aided Analysis of Electronic Circuits: Algorithms and Computational Techniques*. Englewood Cliffs, NJ: Prentice-Hall, 1975.
- [10] *SLIC Simulator for Integrated Circuits User's Guide*, Signetics, Sunnyvale, CA, 1977.
- [12] H. Schichman, "Integration system of a nonlinear network analysis program," *IEEE Trans. Circuit Theory*, vol. CT-17, pp. 378-386, 1970.



**Ronald A. Rohrer** (S'57-M'74-SM'74-F'80) received the B.S. degree from M.I.T., Cambridge, MA, in 1960 and the M.S. and Ph.D. degrees from University of California, Berkeley, in 1961 and 1963, respectively, all in electrical engineering.

Since that time he has held numerous academic and industrial positions. Presently, he is a Professor and Chairperson of the Electrical Engineering Department at Southern Methodist University as well as a consultant on CAD to

Philips Laboratories, Briarcliff Manor, NY. He received the 1964 research paper award of the NEC, the 1967 Browder J. Thompson award of the IEEE, the 1969 Circuit Theory Group paper award, and the 1978 Frederick Emmons Terman award of the ASEE.

+



**Hassan Nosrati** received B.S. degree from Iowa State University, Ames, in 1962, and M.S. and Dr. Eng. Sc. degrees from Columbia University, New York, in 1967 and 1970, respectively, all in electrical engineering.

For the academic year 1970-1971 he was an Assistant Professor of Electrical Engineering at the Tehran Polytechnique Institute, Tehran, Iran. He joined Philips Research Laboratories, Brussels, Belgium, in August 1971, as R&D scientist working in the IC design aids area. He joined TRW Defense and Space System group, Redondo Beach, CA, in April 1973 as a member of Technical Staff working in the CAD area. He has been with Philips Laboratories, Briarcliff Manor, NY, since August 1977 as the Senior Program Leader in charge of the IC Design Aids group.

Dr. Nosrati is a member of Sigma Xi.

# Time, Frequency, and z-Domain Modified Nodal Analysis of Switched-Capacitor Networks

JOOS VANDEWALLE, MEMBER, IEEE, HUGO J. DE MAN, AND JAN RABAEY

**Abstract**—A rigorous and general derivation of the modified nodal equations needed for a time, frequency and z-domain analysis of multi-phase switched-capacitor networks is given. Also a general equivalent circuit for switched-capacitor networks is derived. This technique allows to handle continuous coupling, piecewise-constant inputs as well as continuous inputs. These results can be used to adapt existing circuit analysis programs, based on modified nodal analysis, for efficient simulation of switched-capacitor networks.

Manuscript received November 12, 1979; revised September 5, 1980. The authors are with the Katholieke Universiteit Leuven, Heverlee, Belgium.

## I. INTRODUCTION

RECENTLY much attention has been devoted to switched-capacitor networks (SC networks). A topic of major concern is the construction of simple, efficient, and general simulation programs for such networks. One particular successful approach [1] in this direction is the adaptation of the modified nodal analysis [2] to SC networks. It requires only minor modifications of existing programs based on MNA in order to analyze SC networks efficiently. Here we describe a unifying framework for this time-domain approach and for approaches based on z-

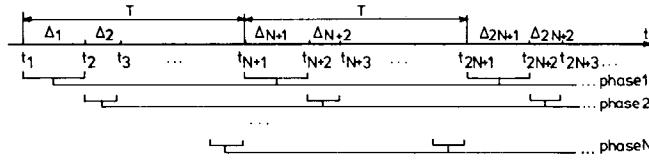


Fig. 1. The timing instances and phases of an  $N$ -phase SC network.

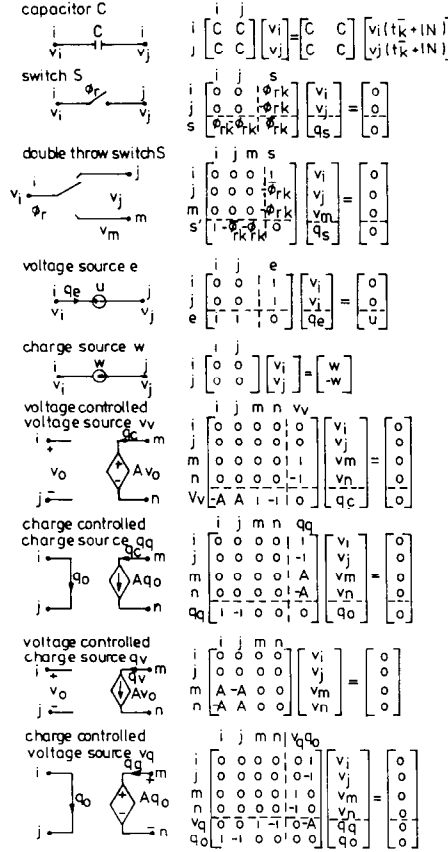


Fig. 2. Contribution or "stamp" for the different components of a SC network to the MNA equations (1).

transforms. This will provide additional insight in the system-theoretic aspects of SC networks. It turns out that there exists an easily computable  $z$ -domain transfer matrix which completely characterizes the signal handling capabilities from the  $N$  phases at the input to the  $N$  phases at the output. Many of our results can be obtained by adapting [3]–[7], [9], [10] to the MNA framework and to multiphase SC networks. However we prefer the direct derivation because of its conceptual simplicity and the direct link with the computer implementation.

II. TIME-DOMAIN MNA

We consider arbitrary linear networks containing ideal switches, capacitors, independent voltage and charge sources (VS and QS), and four types of dependent sources (VCVS, QCVS, VCQS, QCQS). The switches are controlled by Boolean clock variables  $\phi_i(t) = 0$ , or 1.  $\phi_i(t) = 0$  (resp.,  $\phi_i(t) = 1$ ) corresponds to an open (resp., closed) switch at time  $t$  if this switch is driven by clock  $i$ .

The time is partitioned into time slots  $\Delta_m = (t_m, t_{m+1}]$  such that the clock signals (and hence the network) do not vary in  $\Delta_m$ . We assume that the clock signals are  $T$ -periodic, i.e.,  $\phi_i(t + IT) = \phi_i(t) \forall t, i$  (Fig. 1). Each period has  $N$  time slots. The union of the time slots  $\Delta_k, \Delta_{k+N}, \Delta_{k+2N}, \dots$  is called phase  $k$ . All time slots of phase  $k$  have the same duration and the clock values are the same, i.e.,  $\phi_i(t) = \phi_{ik}$ , for all  $t$  in phase  $k$ . We also assume that there are no resistors in the networks. Hence, there are no transients in the waveforms. In practice this is not a severe restriction since all SC networks are designed to reach their equilibrium state quickly enough otherwise their operation would be unreliable.

In Theorem 1 we show how the time-domain equations of a SC network can be set up in the MNA framework [2]. It is useful to keep in mind that MNA is an extension of the nodal equations by adding some branch relations and that each component contributes a pattern (called stamp) given in Fig. 2 to the equation (1).

*Theorem 1:* The above defined linear  $T$ -periodic switched capacitor network is described in the time domain by the equations for  $t \in \Delta_{k+ln}$

$$\begin{bmatrix} A_k & B_k \\ C_k & D_k \end{bmatrix} \begin{bmatrix} v(t) \\ q(t) \end{bmatrix} = \begin{bmatrix} E_k v(t_{k+ln}^-) \\ \mathbf{0} \end{bmatrix} + \begin{bmatrix} w(t) \\ u(t) \end{bmatrix} \quad (1)$$

where  $v(t)$  (resp.,  $u(t)$ ) is the vector of the voltage responses at the nodes (resp., voltage sources in some selected branches) and where  $q(t)$  (resp.,  $w(t)$ ) is the vector of the charges transferred in some selected branches (resp., injected by charge sources in the nodes) between  $t_{k+ln}^-$  and  $t$  for  $t \in \Delta_{k+ln}$  and where the contributions to  $A_k$ ,  $B_k$ ,  $C_k$ ,  $D_k$ ,  $E_k$ ,  $w(t)$ , and  $u(t)$  are constructed as follows.

#### Construction of the Time Domain MNA Equations (1)

1) Choose the unknown variables of the network as follows. The voltages at all the nodes (except the reference voltage) constitute the unknown voltage vector  $v(t)$ . The charges in switches, voltage sources, the controlled branches of VCVS, QCQS, and QCVS's, and controlling branches of QCQS's constitute the unknown charge vector  $q(t)$ . The voltage input  $u(t)$  (resp., charge input  $w(t)$ ) has the same size as  $q(t)$  (resp.,  $v(t)$ ).

2) Set up (1) with  $A_k$ ,  $B_k$ ,  $C_k$ ,  $D_k$ ,  $E_k$ ,  $u(t)$ , and  $w(t)$  zero.

3) For each component of the circuit identify the stamp of Fig. 2. Observe that the stamp of a switch includes the Boolean variable of the clock which controls the switch. If the component is connected to the reference node delete the corresponding row and column in the stamp. Using the indexes of the rows and columns in the stamp add the contribution to the appropriate entries in the matrices  $A_k$ ,  $B_k$ ,  $C_k$ ,  $D_k$  of the left-hand side of (1), and to  $E_k$ ,  $u(t)$ , and  $w(t)$  of the right-hand side of (1).

*Proof:* The charge  $w(t)$  injected in the nodes between  $t_{k+ln}^-$  and  $t \in \Delta_{k+ln}$  is equal to the net charge flowing away from this node in the other branches or using Fig. 2:

$$A_k v(t) - E_k v(t_{k+ln}^-) + B_k q(t) = w(t). \quad (2)$$

The remainder equations of (1) are precisely a vector formulation of the constitutive equations in some selected branches.  $\square$

Clearly equations of (1) can be set up easily by computer using the stamps and compare favorably with the involved topologic or numerical procedures of [3]–[5], [7], [9], [10]. Other issues are compared in Section V. These equations can be easily extended to include nonperiodic networks and nonlinear voltage controlled capacitors and voltage sources [1]. However the subsequent derivations depend on linearity and periodicity and hence we have assumed these throughout.

Observe that the matrices  $A_k = E_k$  and do not depend on  $k$  since all stamps of Fig. 2 satisfy this property. In Section V we will see that other stamps which do not satisfy this property are often more efficient. There we

discuss also the improvement such stamps can bring to the above construction. The following corollary gives a justification from (1) that the voltage transfer in a SC network is not affected, by a relative change in all capacitor values.

*Corollary 1:* By multiplying all capacitances and all controlling factors of VCVS by  $\alpha$  and by multiplying all controlling factors of QCVS by  $1/\alpha$ , all charges of a SC network are multiplied by  $\alpha$  and all voltages remain unchanged.

*Proof:* This corollary follows directly from (1).  $\square$

In order to solve (1) we decompose the input signals and the output signals into piecewise-constant contributions and the remainder waveforms and obtain the following result.

*Theorem 2:* The above defined linear  $T$ -periodic SC network is described in the time domain by

$$\begin{bmatrix} A_k & B_k \\ C_k & D_k \end{bmatrix} \begin{bmatrix} v_{k+ln} \\ q_{k+ln} \end{bmatrix} = \begin{bmatrix} E_k v_{k+ln-1} \\ \mathbf{0} \end{bmatrix} + \begin{bmatrix} w_{k+ln} \\ u_{k+ln} \end{bmatrix} \quad (3.a)$$

and

$$\begin{bmatrix} A_k & B_k \\ C_k & D_k \end{bmatrix} \begin{bmatrix} v^*(t) \\ q^*(t) \end{bmatrix} = \begin{bmatrix} w^*(t) \\ u^*(t) \end{bmatrix}, \quad \text{for } t \in \Delta_{k+ln} \quad (3.b)$$

where

$$v_{k+ln} \triangleq v(t_{k+ln}^-) \quad (4.a)$$

$$v^*(t) \triangleq v(t) - v_{k+ln}, \quad \text{for } t \in \Delta_{k+ln} \quad (4.b)$$

and analogous decompositions for  $q(t)$ ,  $w(t)$ , and  $u(t)$ .

*Proof:* Substitute (4) in (1) and evaluate it at  $t = t_{k+ln}^-$  in order to obtain (3.a). Subtracting (3.a) from (1) generates (3.b). Conversely adding (3.a) and (3.b) and substituting (4) gives (1).  $\square$

In words the Theorem 2 says the following. Decompose the signals into a piecewise-constant waveform such that the amplitude in each time slot is equal to the value at the end of this time slot and a remainder waveform. The output is then the sum of a piecewise-constant waveform obtained by solving the  $N$ -periodic implicit linear algebraic and difference equation (3.a) and a remainder output obtained by solving the linear algebraic equations (3.b) (capacitive feedthrough).

Roughly speaking the existence and uniqueness of the solutions of (3) is guaranteed for almost all networks of interest. For passive networks there are even topologic conditions. In the case that the independent voltage and charge sources are the only active components, it can be shown that (3) is always *solvable* if in time slot  $k$  there is *no cut set* of charge sources and open switches and *no loop* of voltage sources and closed switches. This topological condition is trivially satisfied by any practical circuit since this condition is either violated if the excitation is unacceptable or if one of the switches can be reversed in this time slot.

III. z-DOMAIN MNA

In this section we use z-transform techniques to solve (3). We make again use of the linearity of the capacitors and the controlled sources. Since (3) is time-varying the techniques of the z-transform are not readily applicable. Fortunately (3) is *periodic* and hence we can adapt a method of Jury [6, p. 57]. We partition the sequence of values at the end of each time slot  $v_1, v_2, v_3, v_{N-1}, v_N, v_{N+1}, \dots$  into  $N$  different sequences each having the same phase:  $v_1, v_{N+1}, v_{2N+1}, \dots$  and  $v_2, v_{N+2}, v_{2N+2}, \dots$ , etc., until  $v_N, v_{2N}, v_{3N}, \dots$  (Fig. 1). We take the standard z-transform of these  $N$  sequences.

$$V_k(z) \triangleq \mathcal{Z}\{v_{k+lN}\} = \sum_{l=0}^{\infty} v_{k+lN} z^{-l} \quad (5)$$

where  $k=1, 2, \dots, N$ . Analogously we obtain  $Q_k(z)$ ,  $W_k(z)$ , and  $U_k(z)$ . Remember also [6] that if  $v_i=0, i < 0$

$$\mathcal{Z}\{v_{k+(l-1)N}\} = z^{-1} V_k(z). \quad (6)$$

*Theorem 3:* The above described linear  $T$ -periodic SC network is described in the z-domain by

$$\begin{bmatrix} A_1 & & & & -E_1 z^{-1} & & & & B_1 \\ -E_2 & A_2 & & & & & & & B_2 \\ & -E_3 & A_3 & & & & & & B_3 \\ & & \ddots & \ddots & \ddots & & & & \vdots \\ & & & -E_N & A_N & & & & B_N \\ \hline C_1 & & & & & & & & D_1 \\ & C_2 & & & & & & & D_2 \\ & & C_3 & & & & & & D_3 \\ & & & \ddots & \ddots & & & & \vdots \\ & & & & C_N & & & & D_N \end{bmatrix} \begin{bmatrix} V_1 \\ V_2 \\ V_3 \\ \vdots \\ V_N \\ Q_1 \\ Q_2 \\ Q_3 \\ \vdots \\ Q_N \end{bmatrix} = \begin{bmatrix} W_1 \\ W_2 \\ W_3 \\ \vdots \\ W_N \\ U_1 \\ U_2 \\ U_3 \\ \vdots \\ U_N \end{bmatrix} \quad (7)$$

where the missing entries are zero.

*Proof:* By writing (3.a) in full for  $k=1, 2, \dots, N$  we obtain an augmented set of time-invariant algebraic and difference equations on which (5), (6) can be applied in order to obtain (7).  $\square$

As an interesting alternative to solving (3.a) in the time domain, one can equivalently solve the z-domain equations (7). In terms of the inverse of the matrix in (7), which is called the *z-domain transfer matrix*, the equations (7) become

$$\begin{bmatrix} V_1 \\ V_2 \\ \vdots \\ V_N \\ \hline Q_1 \\ Q_2 \\ \vdots \\ Q_N \end{bmatrix} = \begin{bmatrix} G_{11} & G_{12} & \cdots & G_{1N} & H_{11} & H_{12} & \cdots & H_{1N} \\ G_{21} & G_{22} & \cdots & G_{2N} & H_{21} & H_{22} & \cdots & H_{2N} \\ \vdots & \vdots & \ddots & \vdots & \vdots & \vdots & \ddots & \vdots \\ G_{N1} & G_{N2} & \cdots & G_{NN} & H_{N1} & H_{N2} & \cdots & H_{NN} \\ \hline K_{11} & K_{12} & \cdots & K_{1N} & L_{11} & L_{12} & \cdots & L_{1N} \\ K_{21} & K_{22} & \cdots & K_{2N} & L_{21} & L_{22} & \cdots & L_{2N} \\ \vdots & \vdots & \ddots & \vdots & \vdots & \vdots & \ddots & \vdots \\ K_{N1} & K_{N2} & \cdots & K_{NN} & L_{N1} & L_{N2} & \cdots & L_{NN} \end{bmatrix} \begin{bmatrix} W_1 \\ W_2 \\ \vdots \\ W_N \\ \hline U_1 \\ U_2 \\ \vdots \\ U_N \end{bmatrix} \quad (8)$$

The submatrices  $G_{kn}, H_{kn}, K_{kn}, L_{kn}$  allow a very simple interpretation. Up to this point we consider the SC network as a discrete device which transforms the input sequences of samples at  $t_i^-, i=1, 2, \dots$  of the voltage sources and charge sources into the output sequences of samples of voltages or charges at  $t_i^-, i=1, 2, \dots$ . If only nonzero voltage sources are applied during time slots  $n, n+N, n+2N, \dots$  and if the output node voltages are only observed during time slots  $k, k+N, k+2N, \dots$  then  $H_{kn}(z)$  relates the z-transform of this input sequence to this output sequence, i.e.,  $V_k(z) = H_{kn}(z) U_n(z)$  or it relates inputs at phase  $n$  to outputs at phase  $k$ . In other words  $H_{kn}(z)$  is the z-transform of  $h_{kn}(mT), m=0, 1, \dots$ , i.e., the node voltage responses observed during time slots  $k, k+N, k+2N, \dots$  to unit input voltages applied during time slot  $n$ . Clearly  $H_{in}(z)$  is the z-transform of the node voltage response during time slots  $i, i+N, i+2N, \dots$  to the same input, and can thus be derived from the same network analyses as  $H_{kn}(z)$ . Thus one column of the transfer matrix of (8) can be determined from one network analysis.

*Corollary 2:* Any above defined SC network is com-

pletely characterized by the z-domain transfer matrix of (8).

*Proof:* Observe that the inverse of the matrix of (3.b) can be easily obtained from the z-domain transfer matrix (8) at  $z = \infty$ :

$$\begin{bmatrix} v^*(t) \\ \hline q^*(t) \end{bmatrix} = \begin{bmatrix} G_{kk}(\infty) & H_{kk}(\infty) \\ \hline K_{kk}(\infty) & L_{kk}(\infty) \end{bmatrix} \begin{bmatrix} w^*(t) \\ \hline u^*(t) \end{bmatrix}, \quad \text{for } t \in \Delta_{k+lN}. \quad (9)$$

$\square$

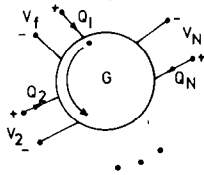


Fig. 3. The symbol of a generalized circulator (6) with constant  $G$ .

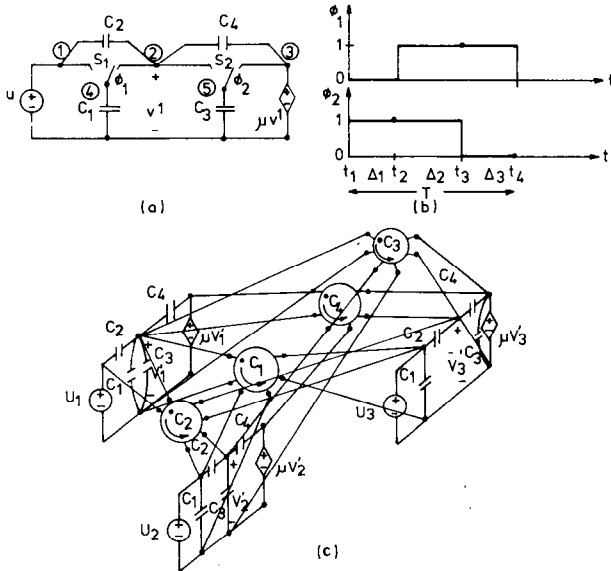


Fig. 4. The SC network of (a) with clock signals (b) has an equivalent circuit (c).

One can wonder next whether there exists a time-invariant network of impedances which is described by (7) and whether such a network can be derived immediately from the SC network. The key idea in obtaining such an equivalent network is to convert the  $N$  phases of any branch into  $N$  different branches. This converts the different instances of *time* into different locations in *space*. We need the following intrinsic  $N$ -port called a *generalized circulator with constant  $G$*  which is defined by (Fig. 3)

$$\begin{bmatrix} Q_1 \\ Q_2 \\ Q_3 \\ \dots \\ Q_N \end{bmatrix} = \begin{bmatrix} 0 & & & & -Gz^{-1} \\ -G & 0 & & & \\ & -G & 0 & & \\ & & & \ddots & \\ & & & & -G & 0 \end{bmatrix} \begin{bmatrix} V_1 \\ V_2 \\ \dots \\ V_N \end{bmatrix} \quad (10)$$

*Construction of the Equivalent Circuit  $\mathcal{N}_e$  of a SC Network  $\mathcal{N}$*

1) For each of the  $N$  phases (i.e.,  $N$  time slots in one period) a network is drawn with the switches in the correct position for this time slot.

2) The  $N$  networks are interconnected by generalized circulators as follows. For each capacitor  $C_i$  in the original circuit we need a circulator with constant  $C_i$ . Port 1 of this circulator is connected to the corresponding capacitor of the first circuit, port 2 to that of the second circuit and so on. Repeat for each capacitor.

It is easy to check that the resulting network is described by (7). For 2-phase SC networks this equivalent

circuit reduces to those of [4], [7] via some transformations (the generalized circulator corresponds to the gyrator of the link two port of [4]). We have applied this algorithm to the circuit of Fig. 4(a) with clock signals of Fig. 4(b) and obtain the equivalent circuit of Fig 4(c).

#### IV. FREQUENCY-DOMAIN ANALYSIS USING MNA

We describe in this section how the practically useful frequency properties can be derived from the time-domain or  $z$ -domain analysis of the previous sections. In many applications such as in filtering one is mainly interested in the frequency components of the input and output voltage waveforms. So we will only derive the expressions for voltages. Since a SC network is a time-varying network in general many frequencies appear at the output for a sinusoidal excitation.

*Theorem 4:* The above described linear  $T$ -periodic SC-network generates for a voltage excitation  $u(t)$  with Fourier transform  $U(\omega)$  a voltage response  $v(t)$  with Fourier transform  $V(\omega)$  given by

$$V(\omega) = \sum_{n=-\infty}^{+\infty} X(\omega, \omega - n\omega_s) U(\omega - n\omega_s). \quad (11)$$

The Fourier transform  $\hat{V}_k(\omega)$  of  $\hat{v}_k(t)$  which is the voltage  $v(t)$  observed during phase  $k$  and zero outside is

$$\hat{V}_k(\omega) = \sum_{n=-\infty}^{+\infty} X_k(\omega, \omega - n\omega_s) U(\omega - n\omega_s) \quad (12)$$

where  $\omega_s = 2\pi/T$  and the *transmission function*

$$X(\omega, \Omega) = \sum_{k=1}^N X_k(\omega, \Omega)$$

with the *transmission function*  $X_k(\omega, \Omega)$  of phase  $k$  given by

$$\begin{aligned} X_k(\omega, \Omega) = & \alpha_k(\omega) e^{-j\omega t_{k+1}} \sum_{l=1}^N e^{j\Omega t_{l+1}} H_{kl}(e^{j\Omega T}) \\ & + [\alpha_k(\omega - \Omega) - \alpha_k(\omega)] \exp[j(\Omega - \omega)t_{k+1}] H_{kk}(\infty) \end{aligned} \quad (13)$$

with  $H_{kl}$  defined by (8) and

$$\alpha_k(\rho) \hat{=} 2 \left\{ \sin[\rho(t_{k+1} - t_k)/2] \cdot \exp[j\rho(t_{k+1} - t_k)/2] \right\} / T\rho. \quad (14)$$

*Proof:* The derivation of (11) is done by first calculating the Fourier transform of the piecewise-constant contribution  $\tilde{v}_k(t)$  in  $\hat{v}_k(t)$  using (8) and  $\hat{V}_k(\omega)$  using Theorem 2 and then summing over all phases  $k=1, 2, \dots, N$ . The response is first calculated for a sinusoidal excitation and afterwards extended to arbitrary excitation. The details are given in the Appendix.  $\square$

Clearly the first term in (13) takes into account the piecewise-constant signals and the second term the continuous coupling. From (11), (12) it follows that a sinusoidal input  $u(t)$  generates an output which has a line spectrum whose lines are  $\omega_s$  apart. Mostly one is only interested in the contribution at the same frequency as the input. This is among others the case if the bandwidth of





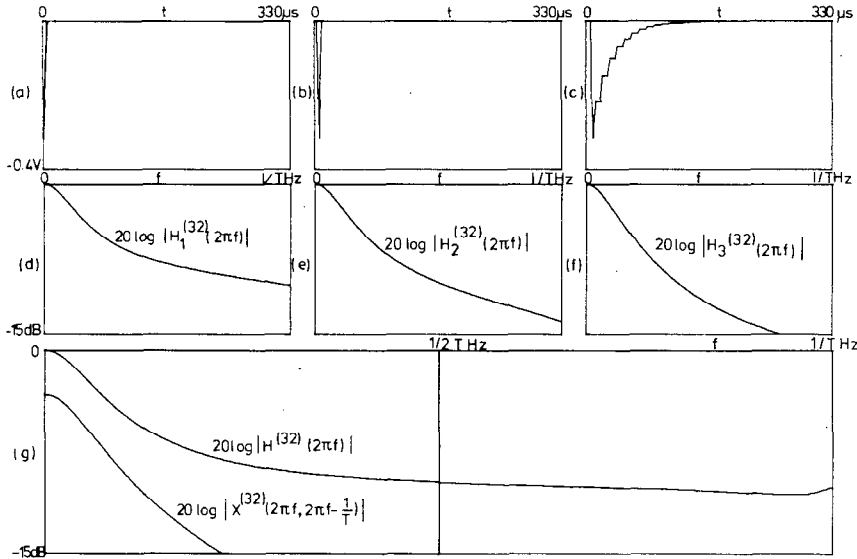


Fig. 6. Computer analysis results of the SC network of Fig. 1. (a)–(c) Responses on impulses in phase 1, 2 and 3. (d)–(e) Frequency-domain transfer functions  $H_k^{(32)}(\omega)$  of phases  $k=1, 2$ , and 3. (f) Frequency-domain transfer function  $H^{(32)}(\omega)$  and aliasing term  $X^{(32)}(\omega, \omega - (2\pi/T))$ .

The  $z$ -domain transfer matrix is the inverse of the matrix in (20) and is not included for brevity. The frequency-domain characteristics  $X_k(\omega, \Omega)$  (aliasing effects and frequency-domain transfer function  $H_k(\omega)$ ) can then be derived easily from (13)–(16). Usually one is only interested in the input–output relationship. In our example the relation between  $u$  (branch 3) and  $v_3$  (node 3) is desired. Hence we need the entries  $H_{kl}^{(32)}(z)$  with  $k, l=1, 2, 3$  which relate  $U_1, U_2, U_3$  to  $V_{31}, V_{32}$ , and  $V_{33}$ . These can be combined in (13) to obtain  $X_k^{(32)}(\omega, \Omega)$  with  $k=1, 2, 3$ .

The practical computer implementation of the time and frequency responses is now briefly described, and applied on our example.

*Computation of the Piecewise-Constant Response to a Piecewise-Constant Voltage Excitation  $u_{j1}, u_{j2}, u_{j3}, \dots$  in Branch  $j$*

- 1) Set up the equations (3a) and use as many composite branches as possible.
- 2) For each phase reorder the equations and find the LU decomposition (see [2]).
- 3) Start with zero initial conditions and solve (3a) with sparse matrix techniques for time slot  $1, 2, 3, \dots$ . Each time the right-hand side of (3a) is obtained from the previous time slot.

This procedure is implemented as an option in the DIANA program. It generates for the circuit of Fig. 4 the responses given in Fig. 6(a, b, c) on impulses in phase 1, 2, and 3, respectively.

*Computation of  $X_k^{(i,j)}(\omega, \Omega)$  or  $H_k^{(i,j)}(\omega)$   $k=1, \dots, N$  via the Time Domain (3.a)*

- 1) Apply a unit voltage excitation in branch  $j$  during phase  $k=1, 2, \dots, N$  and compute for each  $k$  the piecewise-constant voltage response  $\mathcal{C}_k^{(ij)}$  at the node  $i$  as described above.

- 2) Decompose each  $\mathcal{C}_k^{(ij)}$  into  $N$  signals  $h_{kl}^{(ij)}(mT)$  and apply the discrete Fourier transform on these  $N^2$  signals in order to obtain  $H_{kl}^{(ij)}(e^{j\Omega T})$  for  $k, l=1, 2, \dots, N$ .

- 3) Combine the results as in (13) or (16). Remember from the  $z$ -transform [6] that

$$H_{kk}^{(ij)}(\infty) = h_{kk}^{(ij)}(0). \quad (21)$$

Observe here that the number of responses to be computed in [1] can be reduced using the adjoint SC network [8] if only one value of  $k$  is of interest. By applying this approach on our example of Fig. 4 we obtain the plots for the frequency-domain transfer function and the aliasing effect as given in Fig. 6.

*Computation of  $X_k^{(i,j)}(\omega, \Omega)$   $k=1, 2, \dots, N$  via the  $z$ -Domain (7)*

- 1) Set up the equation (7) using the stamps.
- 2) For each value of  $\Omega$  of interest set  $z = e^{j\Omega T}$  and  $U_{jl} = e^{j\Omega t_{l+1}}$ ,  $l=1, 2, \dots, N$  and all other inputs zero. Solve (7) for these values using sparse matrix techniques in order to obtain

$$\sum_{l=1}^N e^{j\Omega t_{l+1}} H_{kl}^{(ij)}(e^{j\Omega T}), \quad \text{for } k=1, 2, \dots, N.$$

- 3) Solve (7) for  $z = \infty$ ,  $U_{jl} = \delta_{kl}$  with  $l=1, 2, \dots, N$ . Combine the results as in (13) or (15).

Let us now compare the two techniques. Clearly (3a) is an  $N$  times smaller set of equations than (7) but it has to be solved more often. Also the time-domain technique requires some FFT's which can be time consuming and can be inaccurate for very selective filters. On the other hand, the time-domain technique allows a mixed mode simulation of SC circuits along with the digital control circuitry as implemented in DIANA [1], [11].

Moreover, it allows a study of the nonideal effects of

SC circuits: offset and leakage current drift, nonlinear distortion, and clock feedthrough [1], [11].

The computations presented in [3]–[5], [7], [9], [10] all use the  $z$ -domain approach and in some form or another require to solve sets of equations equivalent to (7). Some efficiency can be obtained by making use of the structure of the problem in [5], [9]. It is however believed that the formulation (7) allows a clear view on all issues involved in using the  $z$ -domain technique. Further ideas in this direction are currently being investigated.

Concerning other useful design characteristics of SC (e.g., noise performance, sensitivity, group delay) we just mention here that the adjoint SC network allows [8] computational savings which are even more impressive than for  $RLC$  circuits.

## V. CONCLUSIONS

It is shown that the widely used MNA technique can be easily adapted to analyze SC networks. It provides us also with a general equivalent circuit and additional insight in the signal handling capabilities of SC networks. The  $z$ -domain transfer matrix turns out to be a key tool in obtaining frequency characteristics and is in fact a hybrid matrix of the equivalent circuit. Two practical computations of these frequency characteristics are derived from the results. One is based on a repeated solution of (3a) in the time domain and its implementation in DIANA has allowed to analyze successfully many SC circuits [1], [11]. The other is based on the solution of (7) for suitable excitations and seems to be computationally even more attractive.

## APPENDIX PROOF OF THEOREM 4

We calculate first the spectrum of the response for a sinusoidal excitation  $u(t) = Ue^{j\Omega t}$ . Let  $v_k(t)$  be the response sampled at the end of the time slots  $\Delta_k, \Delta_{k+N}, \dots$ . Remember that  $H_{kl}(z)$  is the  $z$ -transform of  $h_{kl}(mT)$ ,  $m=0, 1, \dots$ , then we have in general from (8) for this sinusoidal excitation

$$\begin{aligned} \tilde{v}_k(t) &= \sum_{n=-\infty}^{+\infty} \delta(t - nT - t_{k+1}) \\ &\cdot \left[ \sum_{l=1}^N \left( \sum_{m=0}^{\infty} h_{kl}(mT) U e^{j\Omega[(n-m)T + t_{l+1}]} \right) \right] \\ &= \left( \sum_{n=-\infty}^{+\infty} \delta(t - nT - t_{k+1}) e^{j\Omega nT} \right) \left( \sum_{l=1}^N e^{j\Omega t_{l+1}} H_{kl}(e^{j\Omega T}) U \right). \end{aligned} \quad (\text{A.1})$$

The Fourier transform of this sinusoidally modulated pulse train is

$$\begin{aligned} \tilde{V}_k(\omega) &= \sum_{n=-\infty}^{+\infty} \omega_s \delta(\omega - \Omega - n\omega_s) \\ &\cdot \sum_{l=1}^N e^{j(\Omega t_{l+1} - \omega t_{k+1})} H_{kl}(e^{j\Omega T}) U \quad (\text{A.2}) \end{aligned}$$

which has only contributions at the pulsations  $\omega = \Omega + n\omega_s$ .

In order to derive  $\hat{V}_k(\omega)$  we define a block waveform  $s_k(t)$  which is 1 in  $\Delta_k$  and zero outside. Using Theorem 2 and (9) we have

$$\begin{aligned} \hat{v}_k(t) &= \sum_{l=-\infty}^{+\infty} s_{k+lN}(t) v(t) \\ &= \sum_{l=-\infty}^{+\infty} s_{k+lN}(t) v_{k+lN} + \sum_{l=-\infty}^{+\infty} s_{k+lN}(t) v^*(t) \\ &= \tilde{v}_k(t) * r_k(t) + H_{kk}(\infty) U \\ &\cdot \sum_{l=-\infty}^{+\infty} s_{k+lN}(t) (e^{j\Omega T} - e^{j\Omega t_{k+lN+1}}) \quad (\text{A.3}) \end{aligned}$$

where  $r_k(t) = 1$  for  $t_k - t_{k+1} < t \leq 0$ . From (A.2) we have for the first term of the right-hand side of (A.3):

$$\begin{aligned} \mathcal{F}\{v_k(t) * r_k(t)\} &= 2\pi \alpha_k(\omega) \sum_{l=1}^N H_{kl}(e^{j\Omega T}) \\ &\cdot e^{j(\Omega t_{l+1} - \omega t_{k+1})} \sum_{n=-\infty}^{+\infty} \delta(\omega - \Omega - n\omega_s). \quad (\text{A.4}) \end{aligned}$$

The Fourier transform of the second term in (A.3) can be obtained by standard techniques as

$$\begin{aligned} \mathcal{F}\left\{ \sum_{l=-\infty}^{+\infty} e^{j\Omega t} s_{k+lN}(t) \right\} \\ = 2\pi \alpha_k(\omega - \Omega) e^{j(\Omega - \omega)t_{k+1}} \sum_{n=-\infty}^{+\infty} \delta(\omega - \Omega - n\omega_s) \quad (\text{A.5}) \end{aligned}$$

and

$$\begin{aligned} \mathcal{F}\left\{ \sum_{l=-\infty}^{+\infty} s_{k+lN}(t) e^{j\Omega t_{k+lN+1}} \right\} \\ = 2\pi \alpha_k(\omega) e^{j(\Omega - \omega)t_{k+1}} \sum_{n=-\infty}^{+\infty} \delta(\omega - \Omega - n\omega_s). \quad (\text{A.6}) \end{aligned}$$

This implies that the spectrum  $\hat{V}_k(\omega)$  for the sinusoidal excitation  $u(t) = Ue^{j\Omega t}$  is

$$\hat{V}_k(\omega) = X_k(\omega, \Omega) U 2\pi \sum_{n=-\infty}^{+\infty} \delta(\omega - \Omega - n\omega_s). \quad (\text{A.7})$$

The linearity of the SC network then implies that the response to an arbitrary input

$$u(t) = \frac{1}{2\pi} \int_{-\infty}^{+\infty} U(\Omega) e^{j\Omega t} d\Omega$$

has a spectrum

$$\hat{V}_k(\omega) = \int_{-\infty}^{+\infty} X_k(\omega, \Omega) U(\Omega) \sum_{n=-\infty}^{+\infty} \delta(\omega - \Omega - n\omega_s) d\Omega.$$

This implies (12).  $\square$

## ACKNOWLEDGMENT

The authors appreciate the improvements suggested by L. Claesen and the reviewers and the interesting discussions with Y. P. Tsvividis and F. Brglez.

## REFERENCES

- [1] H. De Man, J. Rabaey, G. Arnout, and J. Vandewalle, "Practical implementation of a general computer aided design technique for switched capacitor circuits," *IEEE J. Solid-State Circuits*, vol. SC-15, pp. 190-200, Apr. 1980.
- [2] C-W. Ho, A. Ruehli, and P. Brennan, "The modified nodal approach to network analysis," *IEEE Trans. Circuits Syst.*, vol. CAS-22, pp. 504-509, June 1975.
- [3] M. L. Liou and Y. L. Kuo, "Exact analysis of switched capacitor circuits with arbitrary inputs," *IEEE Trans. Circuits Syst.*, vol. CAS-26, pp. 213-223, April 1979.
- [4] C. F. Kyrth and G. S. Moschytz, "Two-port analysis of switched-capacitor network using four-port equivalent circuits in the z-domain," *IEEE Trans. Circuits Syst.*, vol. CAS-26, pp. 166-180, Mar. 1979.
- [5] Y. P. Tsvividis, "Analysis of switched capacitive networks," *IEEE Trans. Circuits Syst.*, vol. CAS-26, pp. 935-947, Nov. 1979.
- [6] E. I. Jury, *Theory and Application of the z-Transform Method*. New York: Wiley, 1964.
- [7] Y. L. Kuo, M. L. Liou, and J. W. Kasinskas, "Equivalent circuit approach to the computer-aided analysis of switched capacitor circuits," *IEEE Trans. Circuits Syst.*, vol. CAS-26, pp. 708-714, Sept. 1979.
- [8] J. Vandewalle, H. De Man and J. Rabaey, "The adjoint switched capacitor network and its applications," in *Proc. IEEE Symp. Circuits and Systems*, pp. 1031-1034, (Houston, TX), 1980.
- [9] F. Brglez, "SCOP—A switched—capacitor optimization program," in *Proc. IEEE Symp. Circuits and Systems*, pp. 985-988, 1980.
- [10] G. C. Fang and Y. P. Tsvividis, "Modified nodal analysis with improved numerical methods for switched capacitive networks," in *Proc. IEEE Symp. Circuits and Systems*, pp. 977-980 (Houston, TX), 1980.
- [11] H. De Man, J. Rabaey, G. Arnout, and J. Vandewalle, "DIANA as a mixed mode simulator for MOSLSI sampled—data circuits," in *Proc. IEEE Symp. Circuits and Systems*, pp. 435-438, (Houston, TX), 1980.

+



**Joos Vandewalle** (S'71-M'77) was born in Kortrijk, Belgium, on August 31, 1948. He received the E. E. degree and the Ph.D. degree in applied sciences from the Katholieke Universiteit Leuven, Heverlee, Belgium, in 1971 and 1976, respectively.

From 1972 to 1976 he was Assistant at the E.S.A.T. Laboratory, Katholieke Universiteit Leuven. From 1976 to 1978 he was a Research Associate and from July 1978 to July 1979 he was Visiting Assistant Professor at the University of California, Berkeley.

Since July 1979 he is back with the E.S.A.T.



**Hugo J. De Man** was born in Boom, Belgium, on September 19, 1940. He received the electrical engineering degree and the Ph.D. degree in applied science from the Katholieke Universiteit Leuven, Heverlee, Belgium, in 1964 and 1968, respectively.

In 1968 he became a member of the staff of the Laboratory for Physics and Electronics of Semiconductors at the University of Leuven, working on integrated circuit technology. From 1969 to 1971 he was at the Electronic Research

Laboratory, University of California, Berkeley, as an ESRO-NASA Post Doctoral Research Fellow, working on computer-aided device and circuit design. In 1971 he returned to the University of Leuven as a Research Associate of the NFWO (Belgian National Science Foundation). In 1974 he became a Professor at the University of Leuven. During the winter quarter of 1974-1975 he was a Visiting Associate Professor at the University of California, Berkeley. His actual field of research is the design of integrated circuits and computer-aided design.

+



**Jan Rabaey** was born in Veurne, Belgium, on August 15, 1955. He received the E.E. degree from the Katholieke Universiteit Leuven, Heverlee, Belgium, in 1978. He is working towards the Ph.D. degree on the theory and application of switched capacitor filters in high quality audio systems.

In 1978 he obtained an I.W.O.N.L. fellowship which allows him to work as a Research Assistant at the Laboratory E.S.A.T., Katholieke Universiteit Leuven. In 1980, he obtained a fel-

lowship as N.F.W. O.-aspirant.