

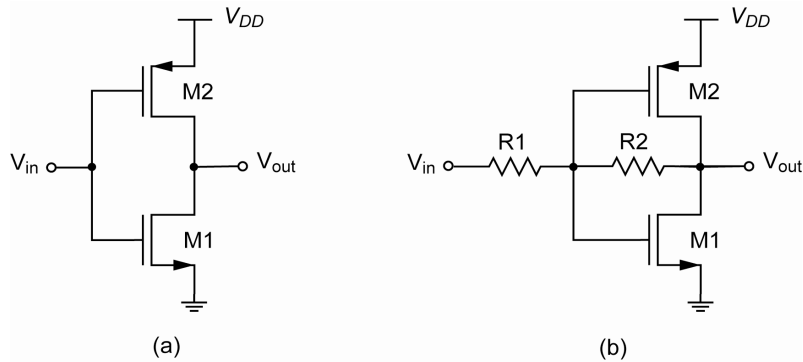
UNIVERSITY OF CALIFORNIA AT BERKELEY
College of Engineering
Department of Electrical Engineering and Computer Science

**R. W. Brodersen,
S. Emami, and D. Sobel**

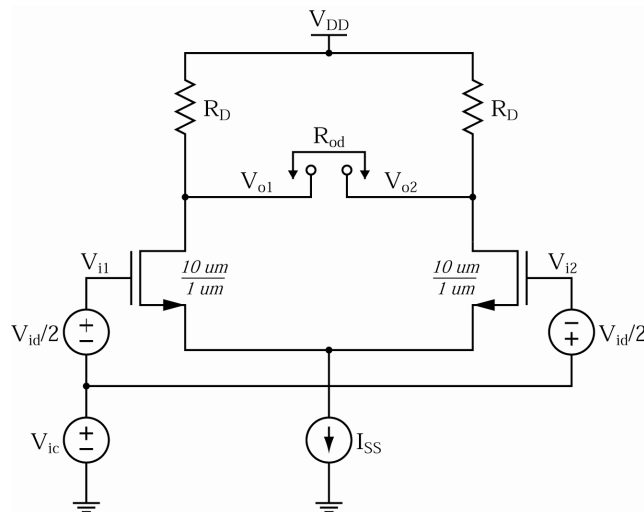
**Homework #3
(Due 9/22/04)**

**EECS140
Fall 2004**

1. Assume $(W/L)_{1,2}=50\mu\text{m}/0.5\mu\text{m}$, $R_1=1\text{ k}\Omega$, $R_2=10\text{ k}\Omega$, $V_{DD}=3\text{ V}$, and the dc level of V_{in} and V_{out} are equal. (use the device data shown in Table 2.1, Razavi, p. 37)
 - (a) Calculate the voltage gain and the output impedance of each circuit.
 - (b) Calculate the sensitivity of each circuit's output with respect to the supply voltage. That is, calculate the small-signal "gain" from V_{DD} to V_{out} .
 - (c) Verify (a)-(b) with HSPICE using the .TF analysis option.



2. Razavi, problem 3.21 (page 98.)
3. In the below circuit, use $V_{DD}=1.8\text{ V}$, $I_{SS}=14\text{ }\mu\text{A}$, $R_D=100\text{ k}\Omega$, $W=10\text{ }\mu\text{m}$, $L=1\text{ }\mu\text{m}$. The device models are given at the end of the assignment.



(a) Calculate V_{DS} of the two transistors by hand, with $V_{ic}=0.9$ V, $V_{id}=0$ V, and verify with HSPICE.

(b) Plot $V_{od}=(V_{o1}-V_{o2})$ vs. V_{id} , with $V_{ic}=0.9$ V over the range $-1.8 < V_{id} < +1.8$ V.

(c) Plot $V_{oc}=(V_{o1}+V_{o2})/2$ vs. V_{ic} , with $V_{id}=0$ V over the range $0 < V_{ic} < +1.8$ V.

Use SPICE to get these plots. If there are any breakpoints in these plots, explain what causes them and calculate their positions by hand.

(d) Calculate A_{dm} with $V_{ic}=0.9$ V, $V_{id}=0$ V. Over what range of V_{id} will the gain remain high? Why does the gain drop off?

(e) Calculate A_{cm} with $V_{ic}=0.9$ V, $V_{id}=0$ V.

(f) Calculate R_{od} with $V_{ic}=0.9$ V, $V_{id}=0$ V.

Verify (d)-(f) with HSPICE using the .TF analysis option.

4. Repeat problem 3 but replace the I_{SS} current source with a resistor which results in the same I_{DS} currents when $V_{ic}=0.9$ V and $V_{id}=0$ V.

Use the following NMOS and PMOS transistor models for Problem 3 and 4.

```
.model nch nmos LEVEL=1 TOX=2.5n VTO=0.5 KP=140.0e-6 LAMBDA=0.1  
+GAMMA=0.5 PHI=0.6
```

```
.model pch pmos LEVEL=1 TOX=2.5n VTO=-0.5 KP=65.0e-6 LAMBDA=0.15  
+GAMMA=0.5 PHI=0.6
```